

## DRY BARREL FIRE HYDRANT VALVE

Type: SSF

Doc No: DS-901-SSF-01-E-X

### 1.0 PRODUCT OVERVIEW

The Dry barrel fire hydrant Valve is a water supply facility installed on the fire water supply pipe network outside the building. It is mainly used for the fire truck to take water from the municipal water supply network or the outdoor fire water supply network to extinguish the fire. It can also directly connect the water belt and the water gun to extinguish the fire. It's one of the important fire protection facilities for fighting fires.



#### Dimensions:

5-1/4" (DN150X128X1219)

#### Design Standard:

AWWA C502

#### Connection Standard:

ASME B16.42

#### Working Pressure:

300PSI, 250PSI, 200PSI, 175PSI

#### Application:

##### Sign Off:

Owner: \_\_\_\_\_ Contractor: \_\_\_\_\_ Engineer: \_\_\_\_\_  
Location: \_\_\_\_\_ Date: \_\_\_\_\_ Approved & Date: \_\_\_\_\_

The Dry Barrel Fire Hydrant Valve is a water supply facility installed on the fire water supply pipe network outside the building, the working temperature is 0 °C -80 °C.

### **Material of Matching Products:**

Material is in accordance with ASTM A536, 65-45-12;

Pipe fittings according to ASME B16.42

### **Surface Treatment:**

- ☐ Epoxy power painting (color numbers as RAL3000, etc)
- ☐ Painting (color numbers as RAL3000, etc)
- ☐ Others would be available upon clients' detailed request

## **2.0 APPROVAL**



## **3.0 SPECIFICATIONS**

### **Product Sketch:**

#### **Sign Off:**

Owner: \_\_\_\_\_ Contractor: \_\_\_\_\_ Engineer: \_\_\_\_\_  
Location: \_\_\_\_\_ Date: \_\_\_\_\_ Approved & Date: \_\_\_\_\_

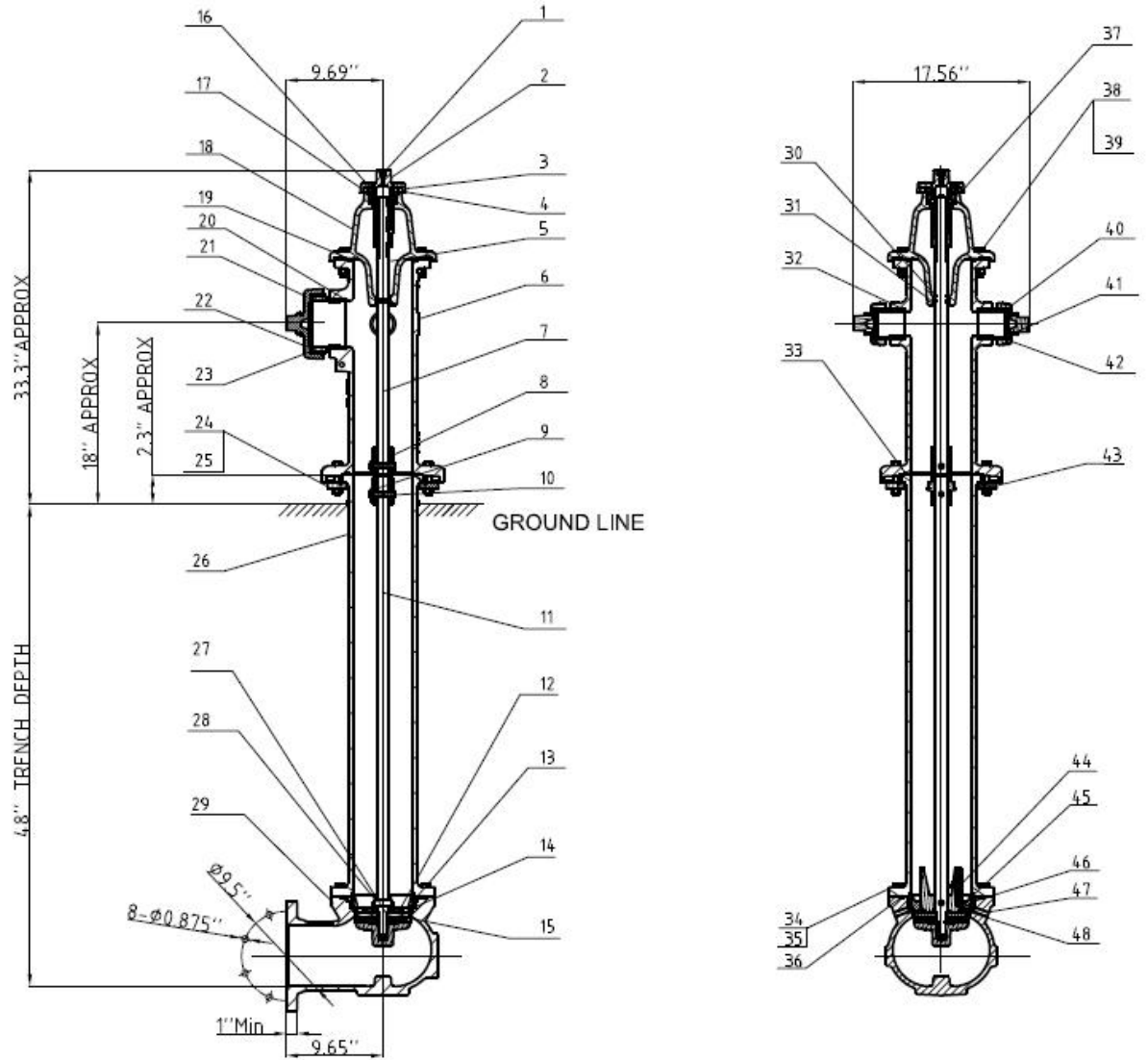


Fig.1 SSF Dry Barrel Fire Hydrant Product Structure

Table 1 SSF Dry Barrel Fire Hydrant Buried Depth

No.	Diameter	Buried Depth	Optional Buried Depth
1	6"	48"	36", 42", 54", 60", 66", 72"

Table 2 SSF Dry Barrel Fire Hydrant

No.	Part	Material	Standard
1	Nozzle	AISI 304	ASTM A276
2	Stem Operating Nut	C95400	ASTM B148
3	Weather Proof Cover	Ductile Iron	ASTM A536 65-45-12
4	Lock Nut	C83600	ASTM B584
5	Bushing	C83600	ASTM B584
6	Upper Cylinder	Ductile Iron	ASTM A536 65-45-12

**Sign Off:**

Owner: \_\_\_\_\_ Contractor: \_\_\_\_\_ Engineer: \_\_\_\_\_  
 Location: \_\_\_\_\_ Date: \_\_\_\_\_ Approved & Date: \_\_\_\_\_

7	Upper Shaft	Carbon Steel Galvanized	ASTM A108
8	Couplings	Gray Iron	ASTM A126 CLASS B
9	Cotter Pin	AISI 304	ASTM A276
10	Flat Head Hinge Pin C/W Hole	AISI 304	ASTM A276
11	Lower Shaft	Carbon Steel Galvanized	ASTM A108
12	Drain Valve	C83600	ASTM B584
13	External Valve Seat	C83600	ASTM B584
14	Internal Valve Seat	C83600	ASTM B584
15	Main Valve Seat	Carbon Steel +EPDM	ASTM D2000
16	O-Ring	VITON	ASTM D2000
17	O-ring	NBR	ASTM D2000
18	Cap	Ductile Iron	ASTM A536 65-45-12
19	O-Ring	NBR	ASTM D2000
20	O-Ring	NBR	ASTM D2000
21	4.5" Nozzle Cap	Ductile Iron	ASTM A536 65-45-12
22	4.5 " Nozzle Cap Mat	EPDM	ASTM D2000
23	4.5" Nozzle	C83600	ASTM B584
24	Bolt	Carbon Steel Galvanized	ASTM A307/A307M SAE GR2
25	Nut	Carbon Steel Galvanized	ASTM A307/A307M SAE GR2
26	Lower Tube	Ductile Iron	ASTM A536 65-45-12
27	Base	Ductile Iron	ASTM A536 65-45-12
28	Drain Valve Pin	AISI 304	ASTM A276
29	Elbow	Ductile Iron	ASTM A536 65-45-12
30	O-Ring	NBR	ASTM D2000
31	O-Ring	NBR	ASTM D2000
32	O-Ring	NBR	ASTM D2000
33	O-Ring	NBR	ASTM D2000
34	Bolt	AISI 304	ASTM F593
35	Nut	AISI 304	ASTM F594
36	O-Ring	NBR	ASTM D2000

**Sign Off:**

Owner: \_\_\_\_\_ Contractor: \_\_\_\_\_ Engineer: \_\_\_\_\_  
 Location: \_\_\_\_\_ Date: \_\_\_\_\_ Approved & Date: \_\_\_\_\_

37	Thrust Washer	PA66	MIL LP-410
38	Bolt	Carbon Steel Galvanized	ASTM A307/A307M SAE GR2
39	Nut	Carbon Steel Galvanized	ASTM A307/A307M SAE GR2
40	2.5" Nozzle Cap	Ductile Iron	ASTM A536 65-45-12
41	2.5" Nozzle Cap Mat	EPDM	ASTM D2000
42	2.5" Nozzle Cap	C83600	ASTM B584
43	Half Flange	Gray Iron	ASTM A126 CLASS B
44	Drain Valve Seat	AISI 304+NBR	ASTM A276+ASTM D2000
45	O-Ring	NBR	ASTM D2000
46	O-Ring	NBR	ASTM D2000
47	Drainage Pipe	C83600	ASTM B584
48	O-Ring	NBR	ASTM D2000

## 4.0 DIMENSIONS AND PERFORMANCE

### 4.1 Strength

Shell Test: 600PSI;

Sealing Test: 600PSI;

Clockwise operation is open, counterclockwise operation is shut.

## 5.0 REFERENCE MATERIALS

Approved certification for Dry Barrel Fire Hydrant Valve

### Sign Off:

Owner: \_\_\_\_\_ Contractor: \_\_\_\_\_ Engineer: \_\_\_\_\_  
 Location: \_\_\_\_\_ Date: \_\_\_\_\_ Approved & Date: \_\_\_\_\_