

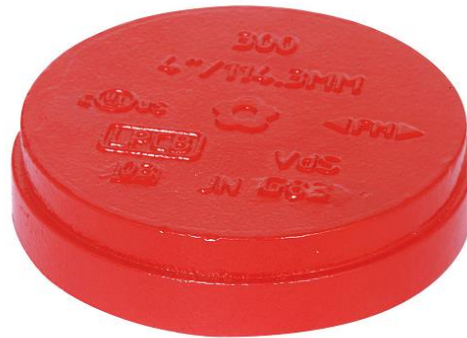


DI GROOVED FITTINGS-CAP

Type: CP Doc No:DS-CP-300-01-E

1.0 PRODUCT OVERVIEW

Caps are used at the end of the groove pipeline connection, which would close the pipeline accordingly.



Dimensions:

1"(DN25)–24"(DN600)

Design Standard:

ISO6182, AWWA C606, GB 5135.11

Connection Standard:

ASME B36.10, ASTM A53-A53M, ISO 4200

Working Pressure:

175PSI-500PSI

Application:

The cap product is suitable for medium and low pressure pipeline systems with nominal pressure 175-500 PSI, nominal size DN25-DN600, temperature range of -20 °C--+180°C, which are widely applied in water supply and drainage, fire-fighting, air conditioning, etc.

Pipe Material:

Welded and seamless rolled steel pipes according to ASME B36.10, ASTM A53-A53M, ISO 4200, GB/T 21835

Surface Treatment:



- Electrophoretic painting
- Epoxy power painting
- Hot-dip galvanizing
- Black
- Others would be available upon clients' detailed request

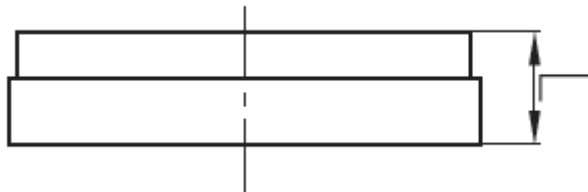
2.0 APPROVALS



3.0 SPECIFICATIONS-MATERIAL

Ductile iron according to ASTM A536, grade 65-45-12. The nodularity is more than 90%, ensuring excellent physical and mechanical properties.

4.0 DIMENSIONS AND PERFORMANCE



Nominal Size	Pipe O.D	Working Pressure	Dimensions L
DN/in	mm/in	PSI/MPa	mm/in
25	33.7	500	22.1
1	1.315	3.45	0.87
32	42.4	500	23.5
1¼	1.66	3.45	0.93
40	48.3	500	23.5
1½	1.9	3.45	0.93
50	60.3	500	23.5
2	2.375	3.45	0.93
65	73	500	23.5
2½	2.875	3.45	0.93
65	76.1	500	24.5
2½	3	3.45	0.96
80	88.9	500	24
3	3.5	3.45	0.94



Nominal Size	Pipe O.D	Working Pressure	Dimensions
			L
DN/in	mm/in	PSI/MPa	mm/in
100	108	500	27
4	4.25	3.45	1.06
100	114.3	500	27
4	4.5	3.45	1.06
25	133	500	25.5
5	5.25	3.45	1
125	139.7	500	25.5
5	5.5	3.45	1
125	141.3	500	25.5
5	5.563	3.45	1
150	159	500	27
6	6.25	3.45	1.06
150	165.1	500	27
6	6.5	3.45	1.06
150	168.3	500	24.5
6	6.625	3.45	0.97
200	216.3	500	30
8	8.516	3.45	1.18
200	219.1	500	30
8	8.625	3.45	1.18
250	273	500	32
10	10.75	3.45	1.26
300	323.9	500	32
12	12.75	3.45	1.26
350	355.6	300	165
14	14	2.07	6.5
400	406.4	300	178
16	16	2.07	7
450	457.2	300	203
18	18	2.07	8
500	508	300	229
20	20	2.07	9
600	609.6	300	267
24	24	2.07	10.5

5.0 REFERENCE MATERIALS



Approved certification for Grooved Fittings and Couplings

I-JM-Grooved fitting: Installation Instructions for grooved fittings and couplings