

AWWA VERTICAL INDICATOR POST

Type:IPDoc No:DS-901-IP-03-E-X

1.0 PRODUCT OVERVIEW

Vertical indicator is used to operate and indicate gate valve switches buried underground or difficult to access. After operation, the valve can be locked.



Dimensions:

DN100-DN600

Design Standard:

UL789/FM1110

Connection Standard:

UL789

Working Pressure:

NO

Application:

This Vertical indicator post is applied at the fire-protection system, the working temperature is 0°C-80°C.

Material of Matching Products:

Cast iron flange according to UL789/FM1110

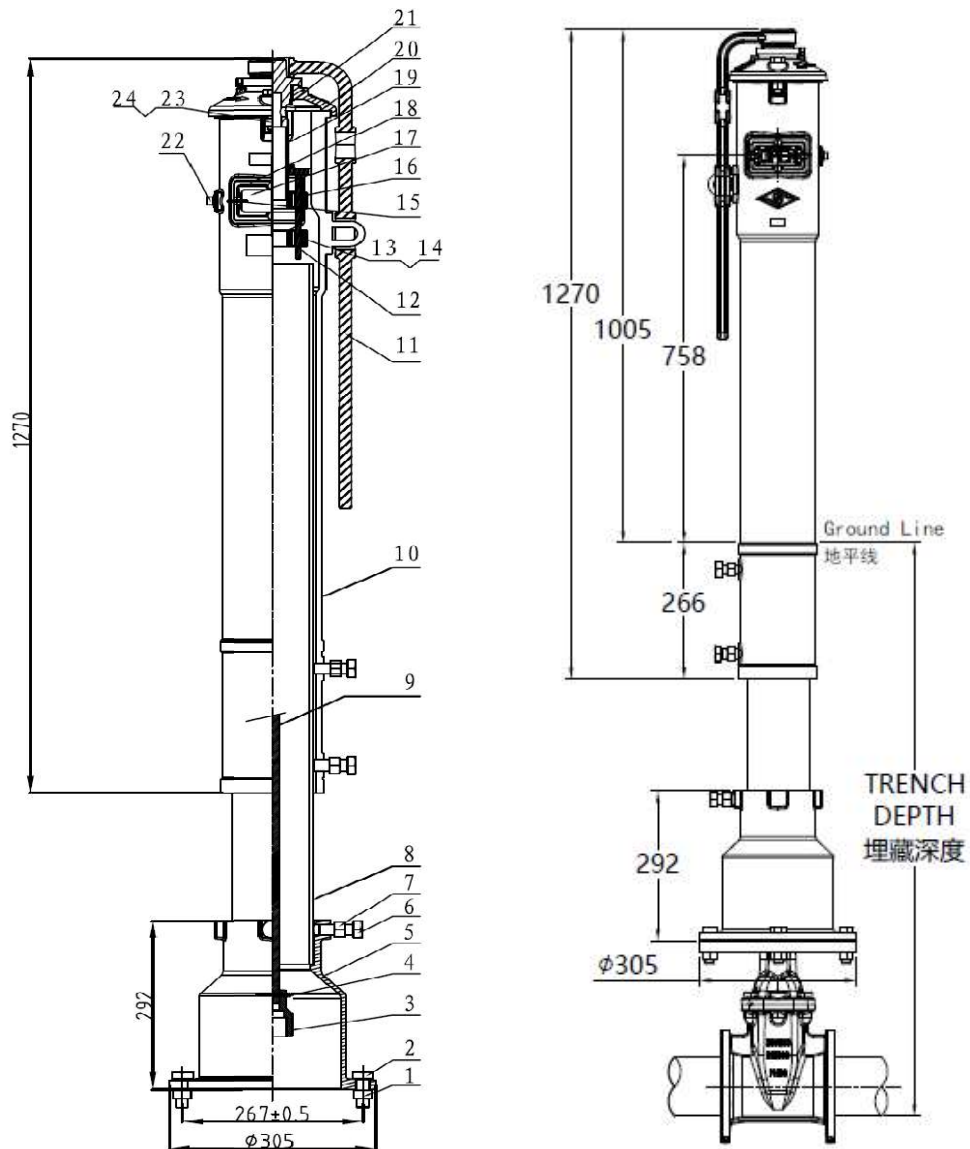
Surface Treatment:

- Epoxy power painting (color numbers as RAL3000, RAL3001, etc)

2.0 APPROVALS



3.0 SPECIFICATIONS Product Sketch:



Part No.	Part	Standard Specification	Options
1	Hex Nut	Carbon Steel Zinc Plated	AISI 304、 AISI 316、
2	Hex Bolt	Carbon Steel Zinc Plated	AISI 304、 AISI 316、
3	Socket	ASTM A536, 65-45-12	
4	Cotter Pin	AISI 304	
5	Base Flange	ASTM A536, 65-45-12	
6	Hex Bolt	Carbon Steel Zinc Plated	AISI 304、 AISI 316、
7	Hex Nut	Carbon Steel Zinc Plated	AISI 304、 AISI 316、
8	Standpipe	Carbon Steel ASTM A53	
9	Stem 1" Square	Carbon Steel AISI 1045	
10	Body	ASTM A536, 65-45-12	
11	Locking Wrench	ASTM A536, 65-45-12	
12	Target Carrier Nut	AISI 304(4-16") HPb59-1(18-24")	
13	Hex Bolt	Carbon Steel Zinc Plated	AISI 304、 AISI 316、
14	Hex Nut	Carbon Steel Zinc Plated	AISI 304、 AISI 316、
15	Hex Bolt	Carbon Steel Zinc Plated	AISI 304、 AISI 316、
16	Instructs the plane	ASTM A536, 65-45-12	
17	Window Class	Plexiglass	
18	Gasket	PTFE	
19	Operating NUT	AISI 304	
20	Top Section	ASTM A536, 65-45-12	
21	Snap Ring	Stainless Steel AISI1066	
22	Plug	Malleable iron Galvanized	
23	Square Nut	Carbon Steel Zinc Plated	AISI 304、 AISI 316、
24	Hex Bolt	Carbon Steel Zinc Plated	AISI 304、 AISI 316、

4.0 DIMENSIONS AND PERFORMANCE

4.1 Dimensions

	SIZE	Trench Depth (mm)
DN100	Min	1070
	Max	1870
DN125	Min	1120
	Max	1920
DN150	Min	1160
	Max	1960

DN200	Min	1250
	Max	2050
DN250	Min	1330
	Max	2130
DN300	Min	1430
	Max	2230
DN350	Min	1640
	Max	2440
DN400	Min	1620
	Max	2420
DN450	Min	1770
	Max	2570
DN500	Min	1790
	Max	2590
DN600	Min	1950
	Max	2750

5.0 REFERENCE MATERIALS

Approved certification for Vertical indicator