

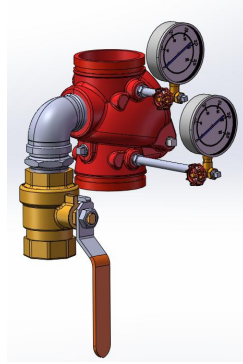
Grooved-End Riser Check Valve

Model: RZSQKFX2

Document Number: DS-922-RZSQKFX2-01-C-X

1.0 PRODUCT OVERVIEW

The riser check valve has check, pressure detection, and drainage functions, and is used in fire sprinkler systems with grooved connecting pipe ends. The ZSQKFX2 series riser check valve is a one-way check valve. When the medium flows forward, the valve disc opens under the action of fluid pressure; When the medium flows in the opposite direction, the valve disc closes under gravity and reverse fluid pressure, cutting off the channel; Pressure gauges are installed in front and behind the valve to display the pressure on the supply side and system side; Open the brass drain valve to release water during system debugging and functional testing. In terms of structure, a full channel design is adopted (i.e. the lowest point of the valve disc is higher than the valve channel when fully opened), with a large flow area and low flow resistance. The valve disc is equipped with a soft sealing rubber gasket, which is conducive to achieving sealing when the medium flows back. The valve disc is equipped with a spring, allowing installation in both horizontal and vertical (upward flow direction) directions. In addition, this series of valves also has the characteristics of simple installation and maintenance, long service life, and is widely used in various fire sprinkler systems.



Dimensions:

2 1/2"-8" (DN65-200)

Design Standard:

UL312、FM1210

Connection Standard:

ISO 6182

Working Pressure:

300PSI

Application:

Riser check valves are mainly used in fire sprinkler systems, with operating temperatures ranging from 0 °C to 80 °C.

Material of Matching Products:

ISO6182 groove

Surface Treatment:

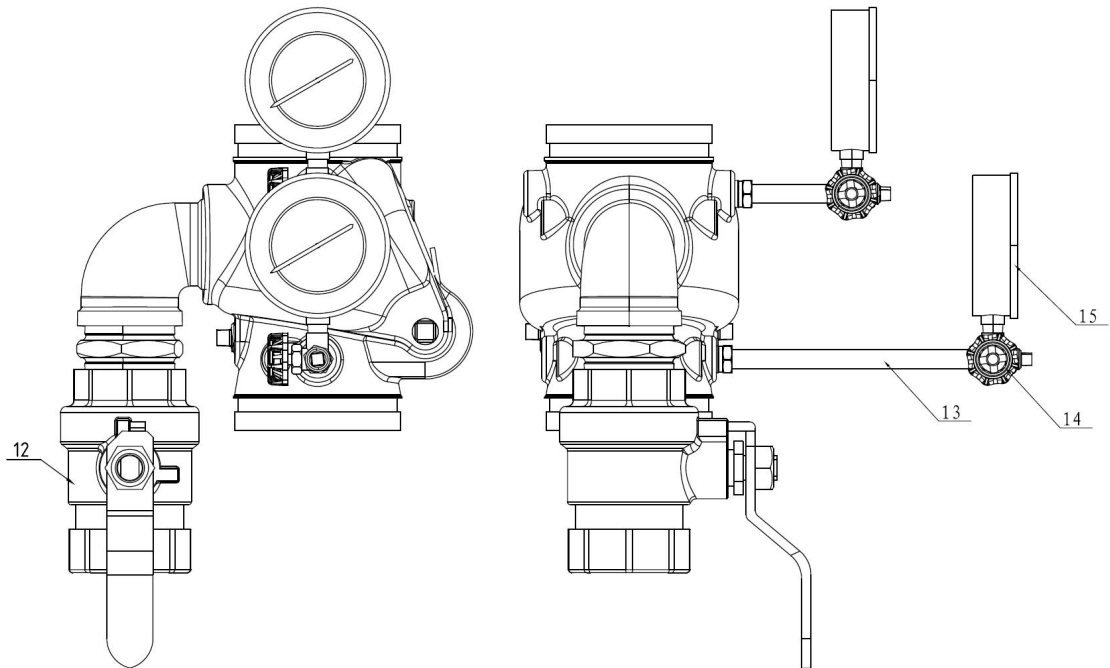
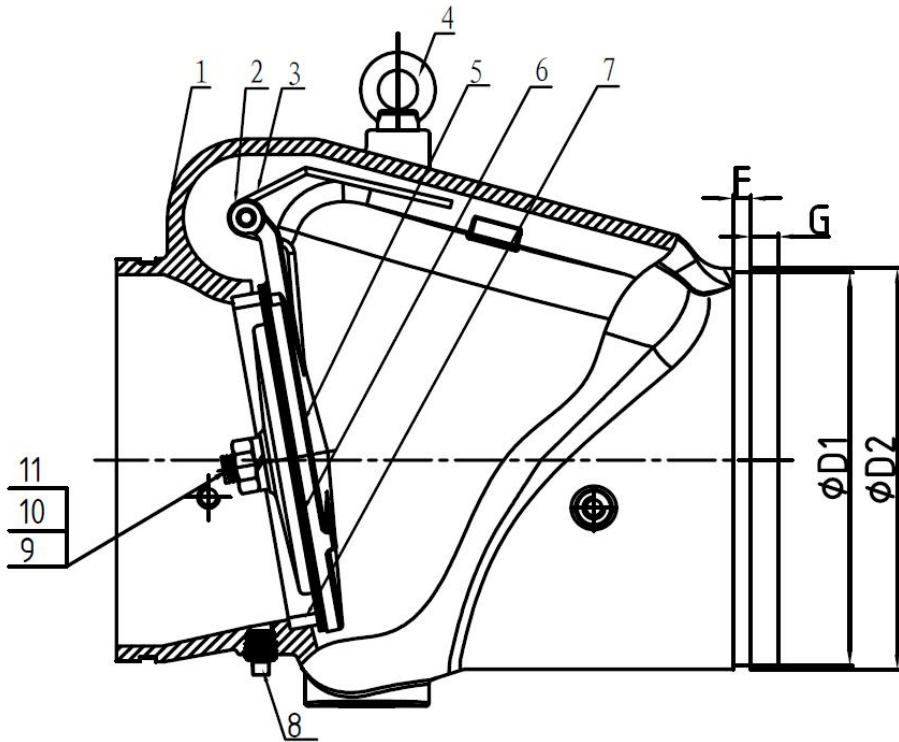
- Epoxy resin powder coated
- Comply with standard ANSI/AWWA C550
- Other surfaces can be provided according to customer requirements

2.0 APPROVALS

Main valve and pressure gauge with UL/FM certification

3.0 SPECIFICATIONS

Product Sketch:



Part No.	Part	Standard Specification	Options
1	Valve Body	ASTM A536, 65-45-12	
2	Hinge Pin	AISI 420	
3	Spring	AISI 304	
4	Eye Bolt	Carbon Steel Zinc Plated (8")	

5	Disc	AISI 304 (2"-4") ASTM A536, 65-45-12 (5"-8")	316
6	Seal Ring	EPDM	
7	Seat	ASTM B62 C83600	
8	Plug	Malleable Iron Galvanized	
9	Stud Bolt	AISI 304	
10	Washer	AISI 304	
11	Nuts	AISI 304	
12	Drain Valve	Brass HPb59-1	
13	Nipple	Carbon Steel Zinc Plated	
14	Isolation Valve	Brass HPb59-1	
15	Pressure Gauge	\	

DN		Dimensions(mm)			
inch	mm	ØD1	ØD2	F	G
2 1/2"	65	69.09	73.0	7.93	15.88
2 1/2"	65	72.26	76.1	7.93	15.88
3"	80	84.94	88.9	7.93	15.88
4"	100	110.08	114.3	9.53	15.88
5"	125	135.48	139.7	9.53	15.88
5"	125	137.03	141.3	9.53	15.88
6"	150	160.9	165.1	9.53	15.88
6"	150	163.96	168.3	9.53	15.88
8"	200	214.4	219.1	11.10	19.05

4.0 REFERENCE MATERIALS

None