

## ANSI & BS STANDARD WATER FLOW INDICATOR WITH RETARD

Type: ZSJZYS

Doc No: DS-901-ZSJZYS-01-E-X

### 1.0 PRODUCT OVERVIEW

Flow indicator, usually installed in the system side of the pipe or pipe branch pipe, After a certain time delay (delay time 0-90s adjustable), when the water flow detected by the leaves, the water flow signal is converted into electrical signals, and electrical switch turn-on start-up Alarm system or directly start the fire pump and other electrical equipment, and can display the fire occurred area.



#### Dimensions:

2" (DN50)-10" (DN250)

#### Design Standard:

GB5135.7 UL 346 ULC-S548 FM1042

#### Connection Standard:

ISO 6182

#### Working Pressure:

2"~8" PN25/363PSI

10" PN16/300PSI

#### Minimum Flow Rate For Alarm:

4-10gmp (15-37.5L/min)

#### Working Temperature:

0°C-68°C

**Electrical Ratings:**

125/250VAC 5A 24/30VDC 3A

**Application:**

Installation in the fire protection system, it and can indicate the fire occurred area.

**Surface Treatment:**

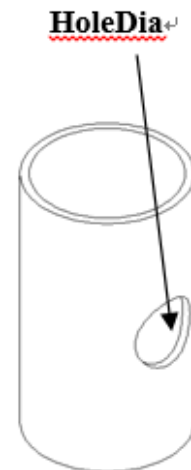
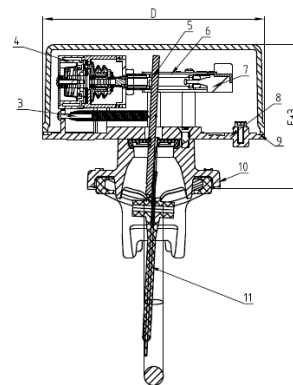
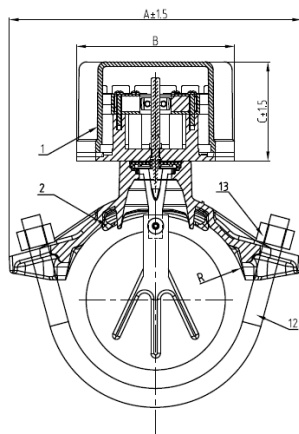
- Epoxy power painting (color number as RAL3000, etc);
- Others' would be available upon clients' detailed request

**2.0 APPROVALS**



**3.0 SPECIFICATIONS**

**Product Sketch:**



Part No.	Part	Standard Specification	Options
1	Cover	ASTM B85-96 383.0E	
2	Body Gasket	EPDM	
3	Spring	SS304	
4	Air Delay Device	PC GV3410R	
5	Stem Seal Assembly	SS304+NBR	
6	Connecting Rod	POM 500P	
7	Switch Assembly	PC GV3410R	
8	Connection Plate	ASTM B85-96 383.0E	
9	Connection Plate Seal	EPDM	
10	Body	ASTM A536,65-45-12	
11	Vane Assembly	PE	
12	U-Bolts	Carbon Steel Zinc Plated	SS304
13	Nuts	Carbon Steel Zinc Plated	SS304

## 4.0 DIMENSIONS AND PERFORMANCE

### 4.1 Dimensions

Size		Dimensio (mm)							Certificate
Inch	mm	R	A $\pm$ 1.5	B	C $\pm$ 1.5	D	E $\pm$ 3	HoleDia (+1.6,0)	
2	50	60.3	116	100	63	140	83.5	30	UL/FM
2 1/2	65	73	120	100	63	140	83.5	30	UL/FM
2 1/2	65	76.1	122	100	63	140	83.5	30	UL/FM
3	80	88.9	145	100	63	140	94	51	UL/FM
4	100	114.3	185	100	63	140	94.5	51	UL/FM
5	125	139.7	212	100	63	140	94.5	51	UL/FM
5	125	141.3	212	100	63	140	94.5	51	UL/FM
6	150	165.1	254	100	63	140	95	51	UL/FM
6	150	168.3	254	100	63	140	95	51	UL/FM
8	200	219.1	298	100	63	140	95	51	UL/FM
10	250	273	381	100	63	140	97.5	70	--